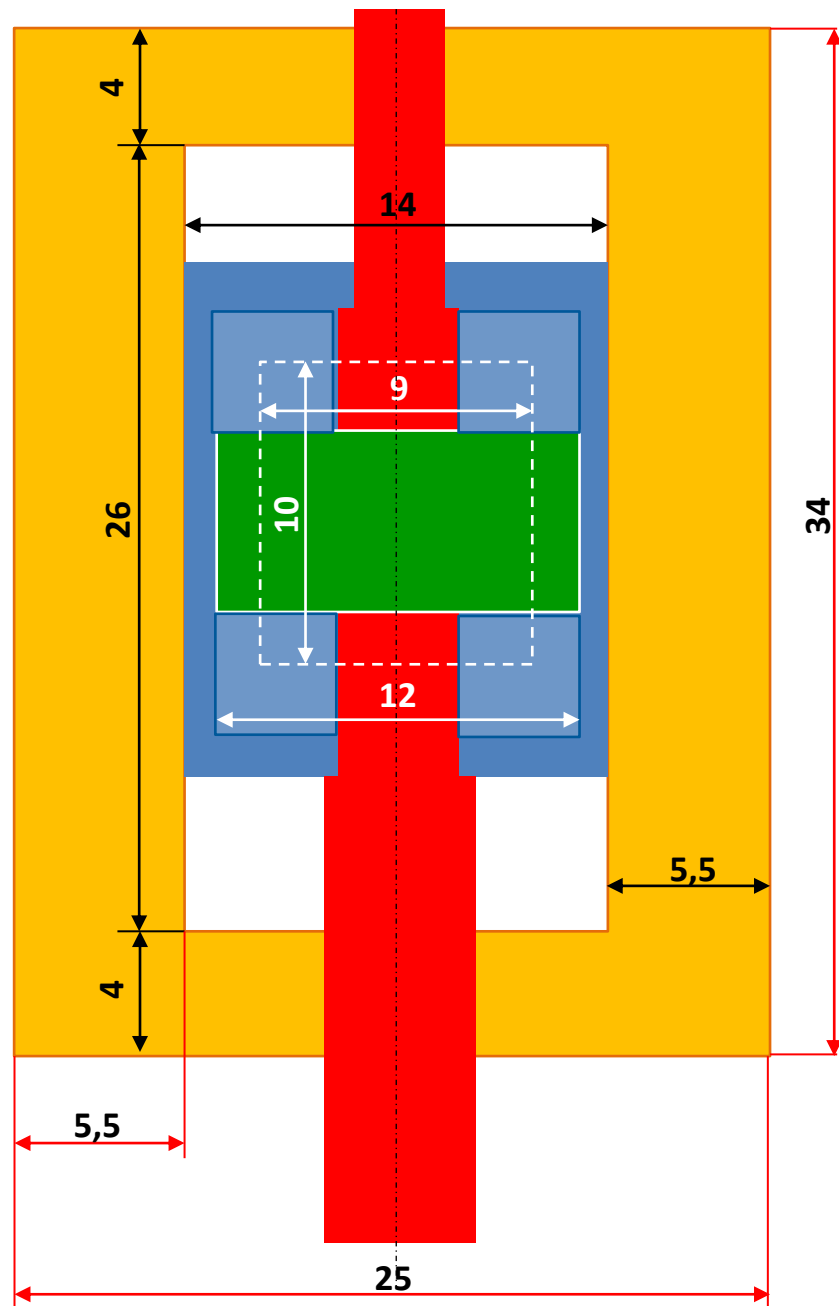
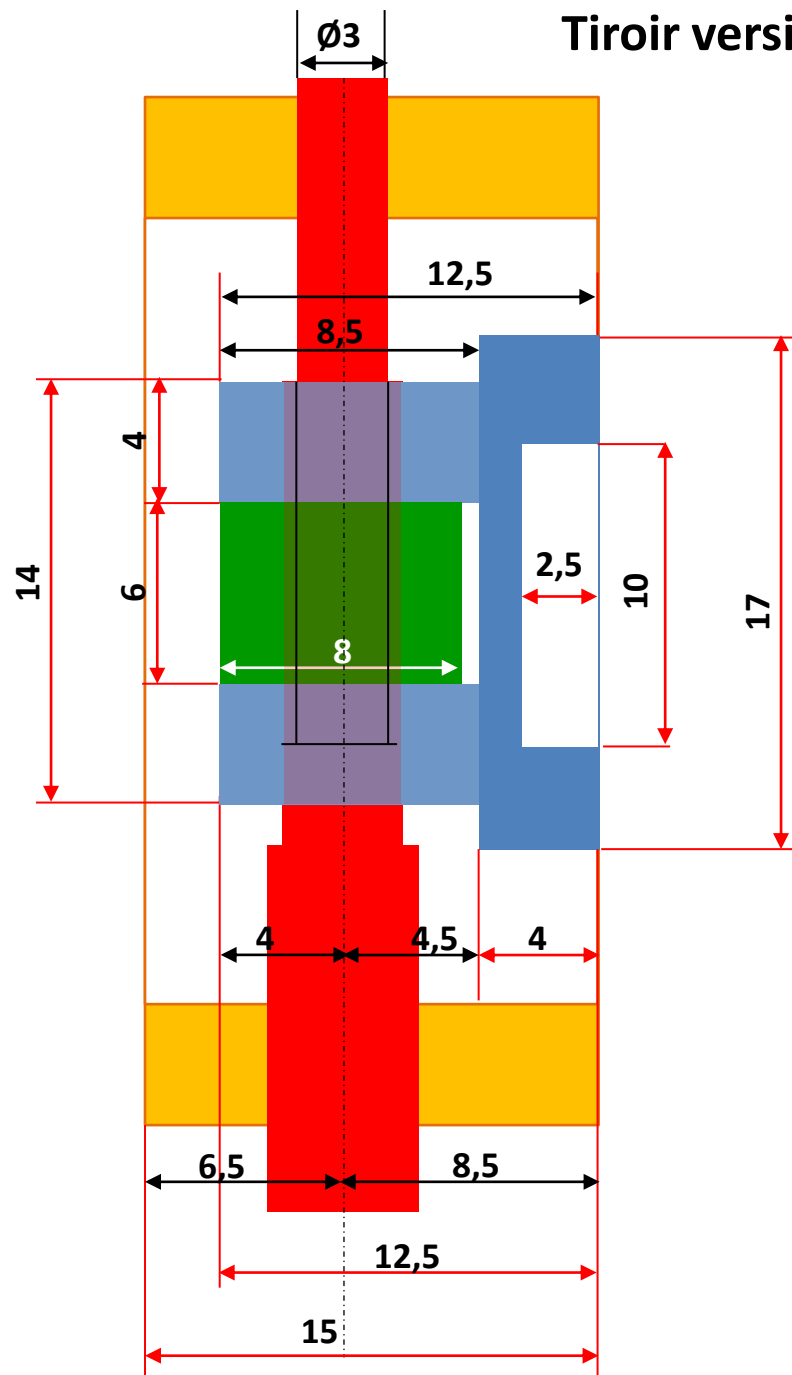
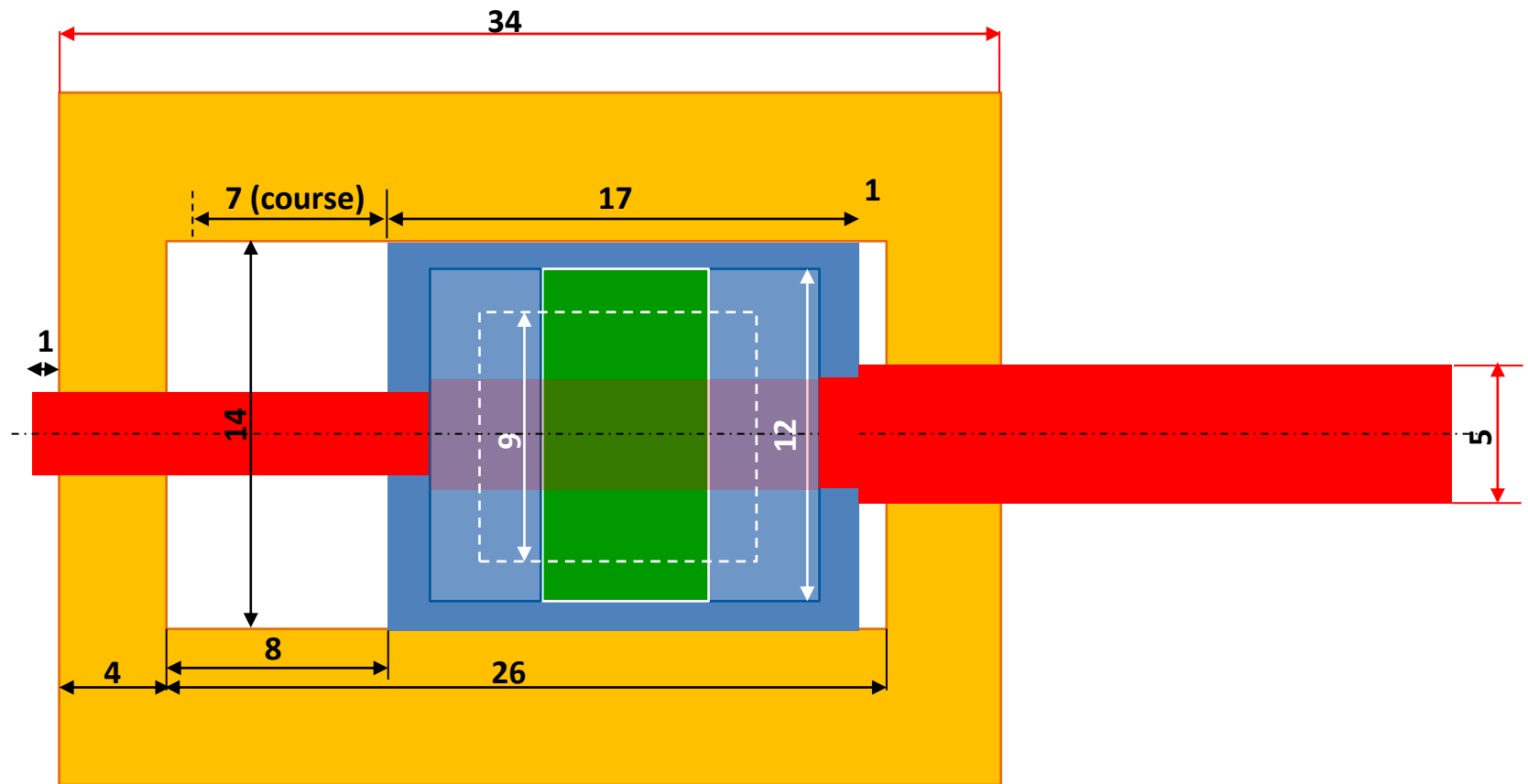
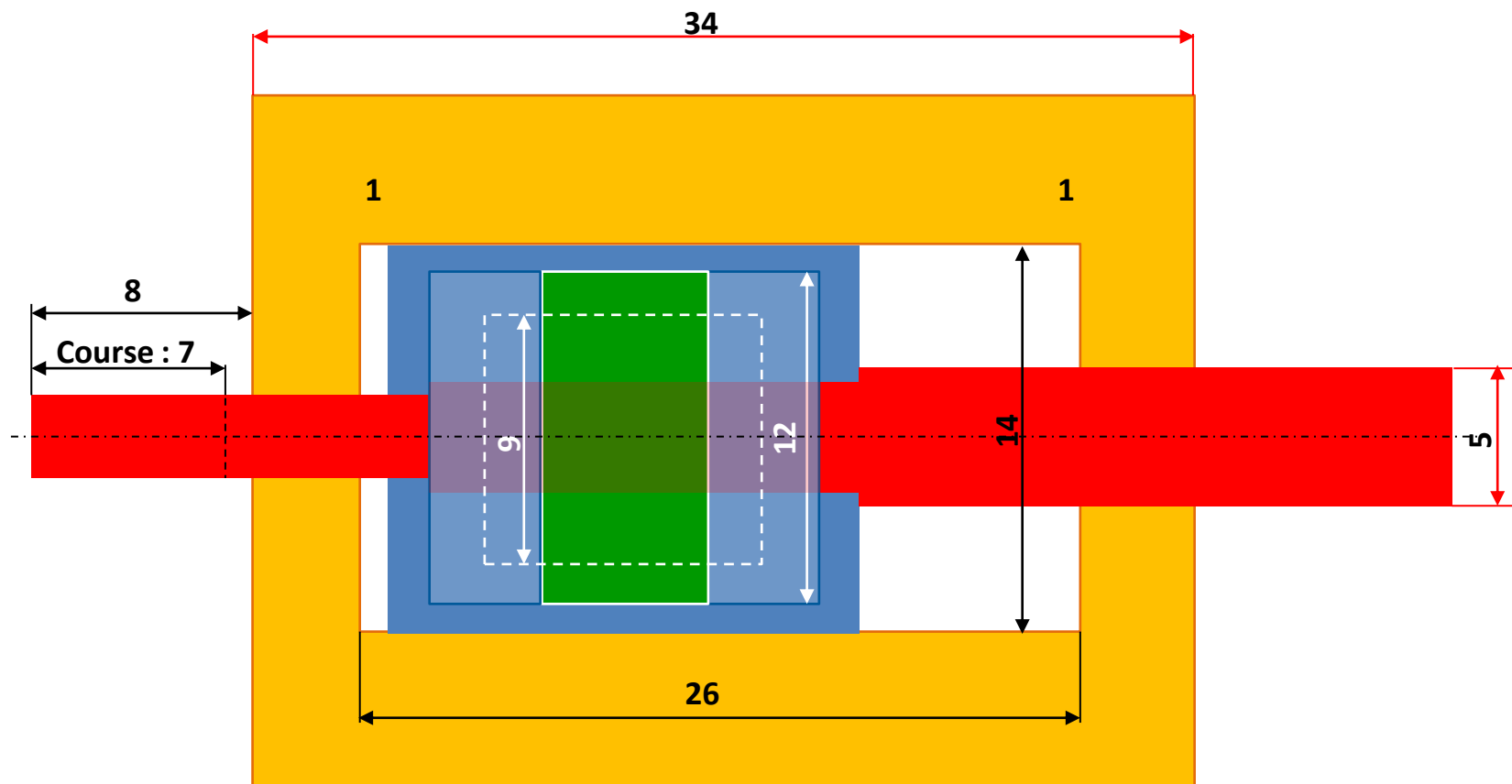
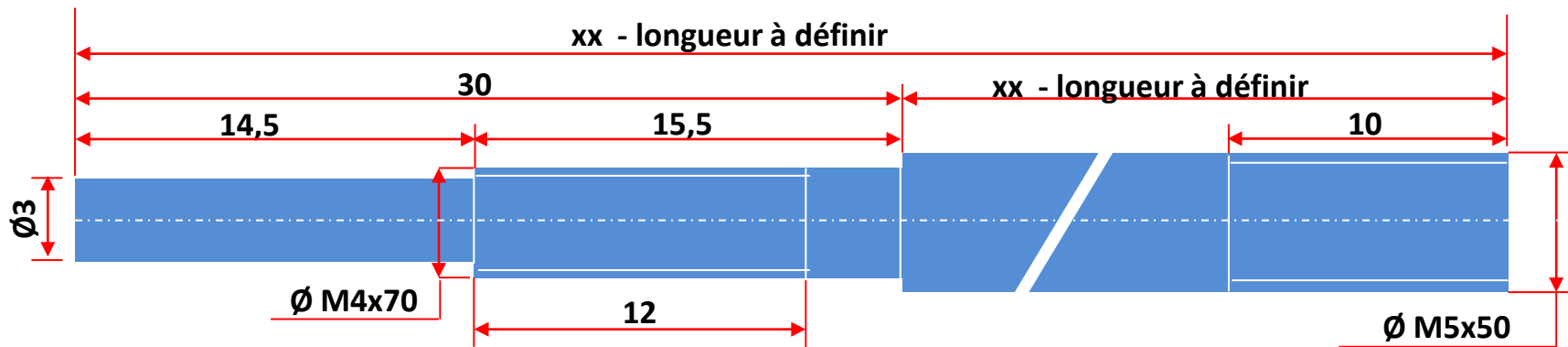


Tiroir version finale usinée





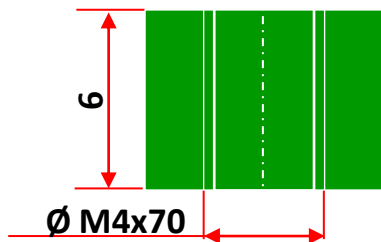
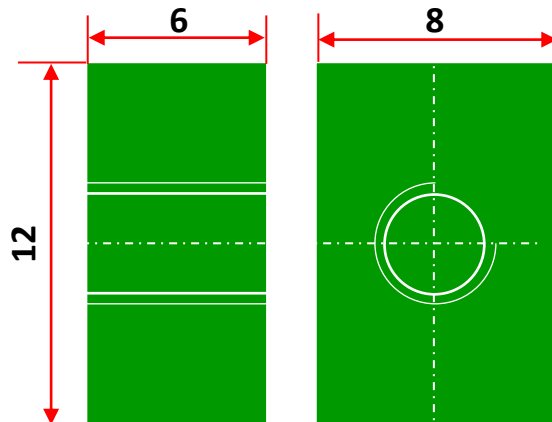




Tige tiroir vapeur - Inox

Utilité des 2 filetages différents :

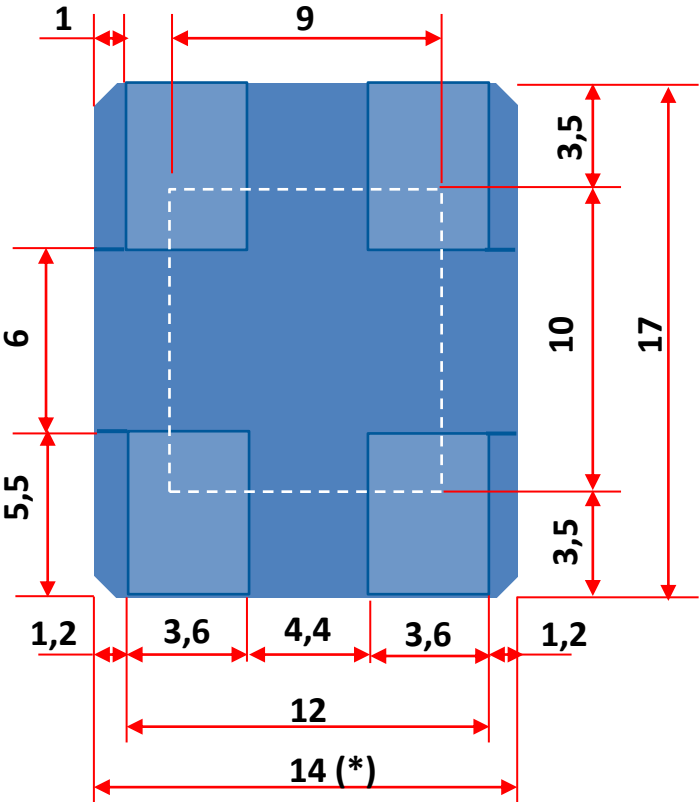
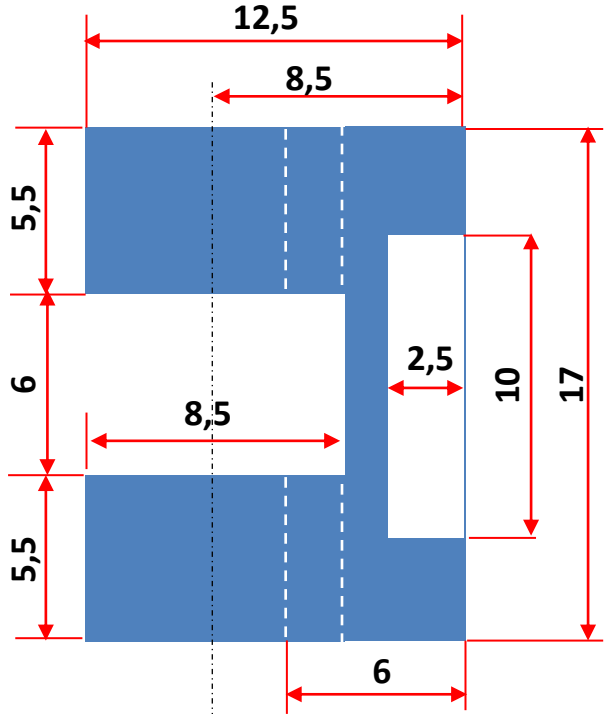
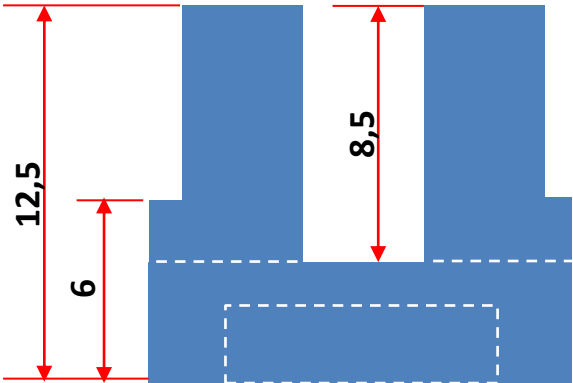
- $\frac{1}{2}$ tour de l'écrou d'entrainement = 0,35 de déplacement
- $\frac{1}{2}$ tour de la chape de tige = 0,25 de déplacement
- Combinaison de $\frac{1}{2}$ tour inverse de chaque = 0,10 de déplacement



Ecrou entrainement tiroir
(laiton)

Tiroir vapeur – laiton

(course du tiroir : 7mm)



(*) = prévoir jeu 4/100^{ème} entre intérieur boîte à vapeur / largeur du tiroir

Jointos torique VITON
1 x Ø int 3 – tore 1,5
1 x Ø int 5 – tore 1,5

